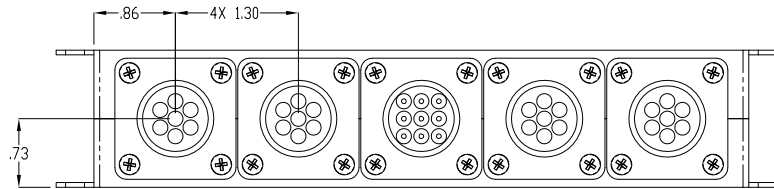
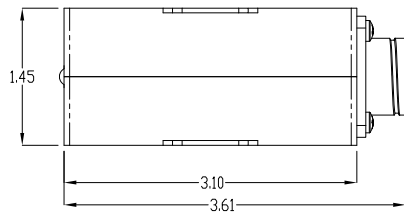
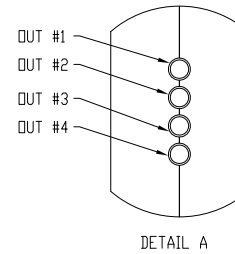
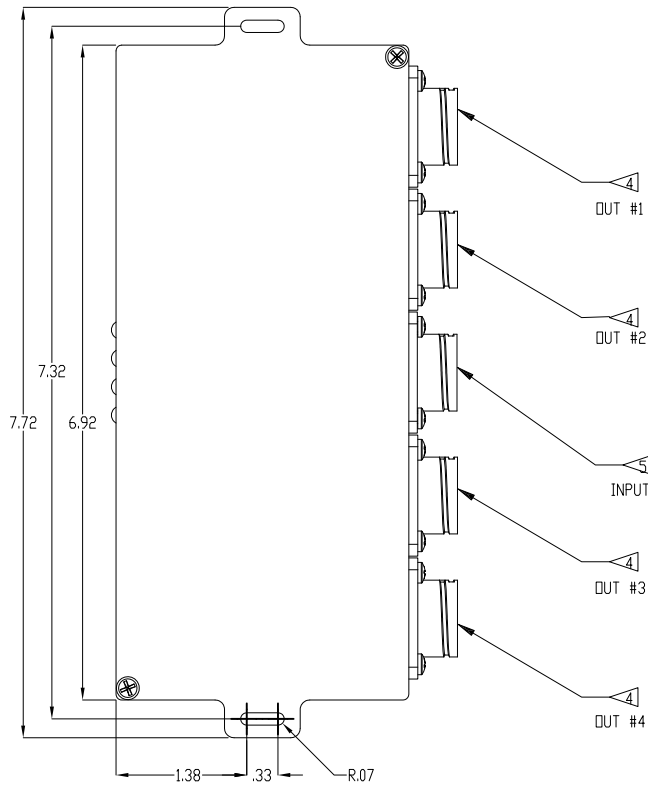
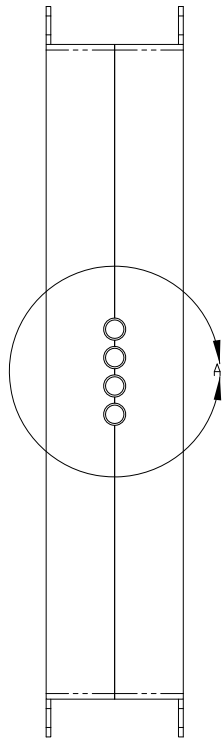


NOTES:

1. REFERENCE MCC-19-193 FOR OPERATION INFORMATION.
2. THIS MODULE PROVIDES REMOTE TURN ON CAPABILITIES.
P/N OF AMP.
3. **CONNECTION TO OUTLET.**
4. **CONNECTION TO INVERTER.**
5. AC CURRENT RATED TO: 15 AMPS MAX.
5 AMPS FOR 110VAC PER OUTLET.
3 AMPS FOR 220VAC PER OUTLET.
6. MATING CONNECTOR KIT AVAILABLE AS MCC1 P/N: 856022-1 FOR OUTLET CONNECTORS.
856007-1 FOR INVERTER CONNECTOR.
8. **Y ADAPTER KIT FOR INSTALLATION OF 2 UNITS AVAILABLE AS MCC P/N 806735-1.**

REVISIONS			
REV.	DESCRIPTION	DATE	DRAWN
C	COMPLETE REDESIGN, REDRAWN WITH CHANGES	3/13/2008	JEH



USE PART - TO INVERTER			
CONNECTOR DESCRIPTION	MATING CONNECTOR	LINE WIRE	
79A375-1 CONNECTOR	856007-1 CONNECTOR	20AWG-1	20AWG-1
		20AWG-4	20AWG-4
		20AWG-4	20AWG-4
		20AWG-1	20AWG-1

USE PART - TO BATTERY			
CONNECTOR DESCRIPTION	MATING CONNECTOR	LINE WIRE	
79A375-1 CONNECTOR	856007-1 CONNECTOR	20AWG-1	20AWG-1
		20AWG-4	20AWG-4
		20AWG-4	20AWG-4
		20AWG-1	20AWG-1

THIS DRAWING CONTAINS PROPRIETARY INFORMATION AND TECHNICAL DATA, WHICH ARE THE SOLE PROPERTY OF MID CONTINENT CONTROLS, INC. THIS DRAWING, SPECIFICATIONS AND DIMENSIONS ARE TO BE KEPT CONFIDENTIAL AND SHOULD NOT BE DISCLOSED TO ANY ORGANIZATION OR PERSON WITHOUT FIRST OBTAINING WRITTEN PERMISSION FROM MID CONTINENT CONTROLS, INC.

FINISH: NA
 MATERIAL: NA

UNLESS OTHERWISE SPECIFIED DIMENSIONS ARE IN INCHES. TOLERANCES ARE:
 DECIMALS ± .01 ANGLES ± 1°

MID CONTINENT CONTROLS, INC.
 (316)789-0088 901 NORTH RIVER, DERBY, KS 67037

TITLE
**POWER CONTROLLER - AC
 110/220 (ONE IN - FOUR OUT)**

SIZE | DRAWN | DWG NO. | REV
 C | JEH | 106282 | C

SCALE: 1:1 | DATE: 11/05/2007 | SHEET: 1 OF 1