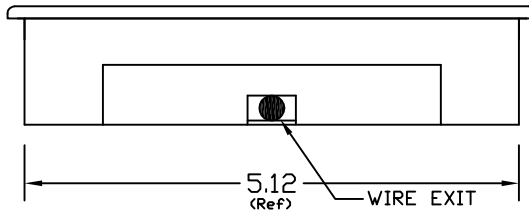
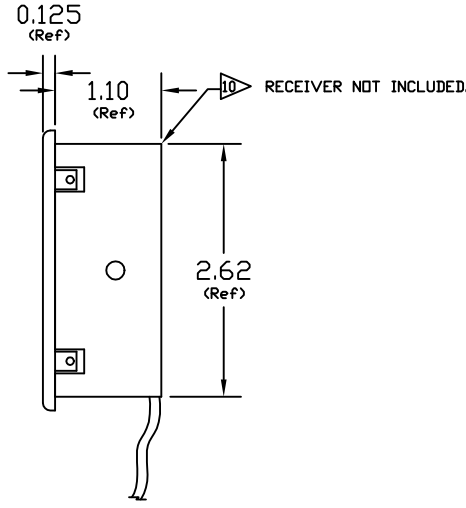
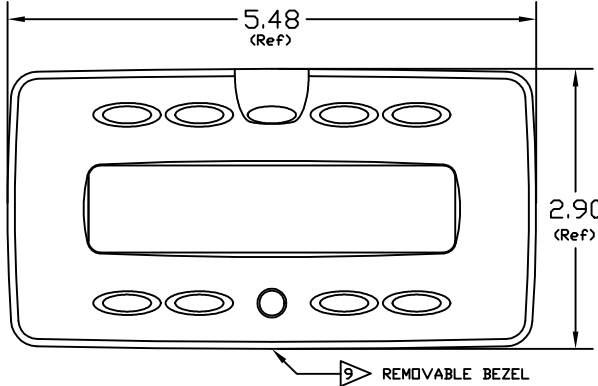


NOTES:

- 1) TESTING: USE MCCI DOCUMENT # MCC-14-599.
- 2) P/N OF ITT CANNON
- 3) WIRE BUNDLE LENGTH TO BE 12" MINIMUM FROM EDGE OF PANEL.
- 4) ASSEMBLY SCREWS REQUIRED (FOUR #4-40 x 0.25" FLAT HEAD)
- 5) INSTALLATION PROCEDURES: SEE MCCI DOCUMENT NUMBER MCC-19-021.
- 6) SWITCH PANEL CONFIGURATION BITS.
- 7) P/N OF AMPHENDL
- 8) SHADES: UP --> 'A' IS POSITIVE AND 'B' IS NEGATIVE.
DOWN --> 'B' IS POSITIVE AND 'A' IS NEGATIVE.
- 9) BEZEL NOT INCLUDED. REQUEST PN 401411-1.
- 10) RECEIVER NOT INCLUDED. REQUEST PN 401379-1.
- 11) CONFIGURATION AND OPERATION: SEE MCCI DOCUMENT MCC-19-025
- 12) WEIGHT: 0.65 LBS.
- 13) P/N OF AMP
- 14) Current Consumption is 125 mA typical and 200 mA peak.

CONF. #	CONFIGURATION	BIT 1	BIT 0
1	HP READ/TABLE	FLOAT	FLOAT
2	HP READ/READ	FLOAT	GND
3	HP READ	GND	FLOAT
4	VIP /HP COMBO	GND	GND

REVISIONS				
ZONE	REV	DESCRIPTION	DATE	DRAWN
	A	1. Added 569875-1 Boot & 558527-1 Strain Relief to wiring chart 2. Added flag note 13 3. Added note 14	02/25/02	DAL
	B	1. Changed Pin 5 to N/C, was GROUND	03/29/02	DAL
	C	NOTE 5 DID REFER TO MCCI-19-025 FOR INSTALLATION	07/03/02	GBE



1) VIP PANEL

CONNECTOR DESCRIPTION	
PART NUMBER	DESCRIPTION
5-557963-3	CONNECTOR
558527-1	Strain Relief
569875-1	BOOT

PIN	DESCRIPTION	CIRCUIT TYPE
1	CE1 DATABUS (D)	PREFAB CABLE REF. DWG 108001
2	CE1 DATABUS (C)	
3	CE1 DATABUS (B)	
4	CE1 DATABUS (A)	
5	N/C	
6	VIDEO RETURN	
7	VIDEO OUTPUT	
8	AUDIO COMMON	
9	RIGHT AUDIO OUTPUT	
10	LEFT AUDIO OUTPUT	

VIDEO OUTPUT CONNECTOR	
IN-LINE BNC JACK	MATING CONNECTOR
69475	69475

WIRING DESCRIPTION CHART		
P/N	DESCRIPTION	CIRCUIT TYPE
DBM425P	CONNECTOR	
DB20962	BACKSHELL	
D20419-21	SCREW LOCKS	
DBM425S	MATING CONNECTOR	
PIN	DESCRIPTION	CIRCUIT TYPE
1	28VDC POWER	SUPPLY VOLTAGE
2	GND	DC RETURN
3	NC	NA
4	READ LIGHT OUTPUT	ALT ACTION 28VDC @ 1A
5	TABLE LIGHT OUTPUT	ALT ACTION 28VDC @ 1A (1)
6	TABLE SHADE OUTPUT (A)	SOLID-STATE REVERSING MOTOR CONTROLLER @ 250mA (2)
7	TABLE SHADE OUTPUT (B)	MOTOR CONTROLLER @ 250mA
8	SEAT SHADE OUTPUT (A)	SOLID-STATE REVERSING MOTOR CONTROLLER @ 250mA
9	SEAT SHADE OUTPUT (B)	MOTOR CONTROLLER @ 250mA
10	NC	NA
11	NC	NA
12	NC	NA
13	NC	NA
14	NC	NA
15	NC	NA
16	READ LIGHT 2-WAY	MOM. GND INPUT @ 50mA
17	TABLE LIGHT 2-WAY	MOM. GND INPUT @ 50mA (1)
18	TABLE SHADE 2-WAY UP	MOM. GND INPUT @ 50mA (2)
19	TABLE SHADE 2-WAY DN	MOM. GND INPUT @ 50mA (2)
20	NC	NA
21	NC	NA
22	"SHADES" PRESENT	MAINTAINED GND INPUT (3)
23	MONITOR PRESENT INPUT	MAINTAINED GND INPUT (4)
24	CONFIG. BIT 0	MAINTAINED GND INPUT
25	CONFIG. BIT 1	MAINTAINED GND INPUT

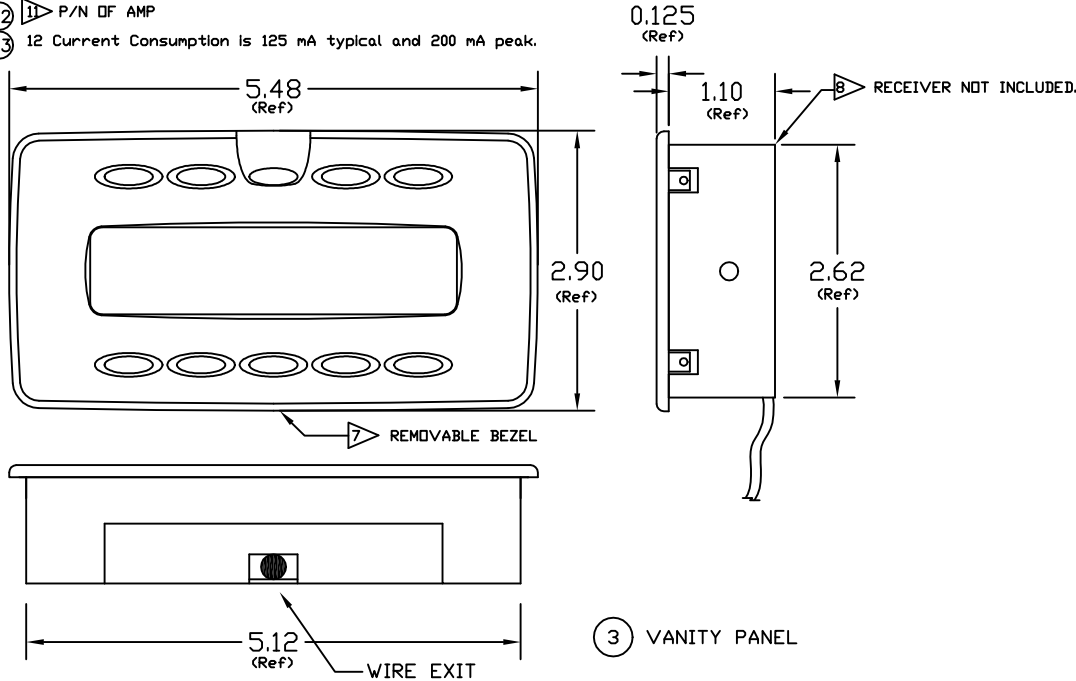
- (1) CONFIG #2:(REF NOTE 6) ACTS AS OUTSIDE READ
- CONFIG #3:(REF NOTE 6) NOT USED
- CONFIG #4:(REF NOTE 6) ALWAYS ACTS AS TABLE
- (2) CONFIG #2:(REF NOTE 6) ACTS AS OUTSIDE SEAT SHADE
- CONFIG #3:(REF NOTE 6) NOT USED
- (3) CONFIG #3:(REF NOTE 6) GND IF SHADE NOT USED
- (4) GND IF LOCAL VIDEO USED

<small>THIS DRAWING CONTAINS PROPRIETARY INFORMATION AND TECHNICAL MATERIAL THAT ARE THE SOLE PROPERTY OF MID CONTINENT CONTROLS, INC. THIS MATERIAL SHOULD BE TREATED AS CONFIDENTIAL BY ITS RECIPIENT AND SHOULD NOT BE SHOWN OR DISCLOSED TO ANY ORGANIZATION OR PERSON WITHOUT FIRST OBTAINING WRITTEN PERMISSION FROM MID CONTINENT CONTROLS, INC.</small>		Mid Continent Controls, Inc. (316)789-0088 901 N. River, Derby, KS 67037	
SWITCH PANEL			
FINISH: PER CUST PD		SIZE C	SCALE 1:1
MATERIAL: N/A	DRAWN TLP	DWG NO. 101007	REV C
TOLERANCE: ±0.010" UNLESS NOTED	DATE 12/06/01	SHEET 1	

NOTES:

- 1) TESTING: USE MCCI DOCUMENT # MCC-14-601.
- 2) P/N OF ITT CANNON
- 3) WIRE BUNDLE LENGTH TO BE 12" MINIMUM FROM EDGE OF PANEL.
- 4) ASSEMBLY SCREWS REQUIRED (FOUR #4-40 x 0.25" FLAT HEAD)
- 5) INSTALLATION PROCEDURES: SEE MCCI DOCUMENT NUMBER MCC-19-021.
- 6) SHADES: UP --> A IS POSITIVE AND B IS NEGATIVE.
DOWN --> B IS POSITIVE AND A IS NEGATIVE.
BOTH SHADES OPERATE UP AND DOWN FROM COMMON CONTROLS.
- 7) BEZEL NOT INCLUDED. REQUEST PN 401412-1.
- 8) RECEIVER NOT INCLUDED. REQUEST PN 401379-1.
- 9) CONFIGURATION AND OPERATION: SEE MCCI DOCUMENT MCC-19-027
- 10) WEIGHT: 0.65 LBS.

- A2 1) P/N OF AMP
- A3 12 Current Consumption is 125 mA typical and 200 mA peak.



REVISIONS				
ZONE	REV	DESCRIPTION	DATE	APPROVED
	A	1. Added 569875-1 Boot & 568527-1 Strain Relief to Wiring Chart 2. Added flag note 11 3. Added note 12	02/25/02	DAL

WIRING DESCRIPTION CHART		
P/N	DESCRIPTION	
DEMAMP	CONNECTOR	
DE44994	BACKSHELL	
D20419-21	SCREW LOCKS	
DEMAGS MATING CONNECTOR		
PIN	DESCRIPTION	CIRCUIT TYPE
1	28VDC POWER	SUPPLY VOLTAGE
2	GND	DC RETURN
3	SEAT LIGHT OUTPUT	ALT ACTION 28VDC
4	SINK LIGHT OUTPUT	ALT ACTION 28VDC
5	VANITY SHADE OUTPUT #1 (A)	SOLID-STATE REVERSING
6	VANITY SHADE OUTPUT #1 (B)	MOTOR CONTROLLER
7	VANITY SHADE OUTPUT #2 (A)	SOLID-STATE REVERSING
8	VANITY SHADE OUTPUT #2 (B)	MOTOR CONTROLLER
9	NC	NA

CONNECTOR DESCRIPTION	
PART NUMBER DESCRIPTION	
5-557983-3	CONNECTOR
568527-1	STRAIN RELIEF
569875-1	BOOT
WIRE DESCRIPTION	
PIN	DESCRIPTION
1	CE1 DATABUS (D)
2	CE1 DATABUS (C)
3	CE1 DATABUS (B)
4	CE1 DATABUS (A)
5	NC
6	NC
7	NC
8	NC
9	NC
10	NC

PREFAB CABLE
REF. DRAWING 108001

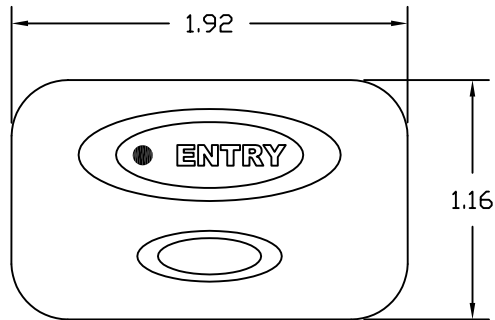
THIS DRAWING CONTAINS PROPRIETARY INFORMATION AND TECHNICAL MATERIAL THAT ARE THE SOLE PROPERTY OF MID CONTINENT CONTROLS, INC. THIS MATERIAL SHOULD BE TREATED AS CONFIDENTIAL BY ITS RECIPIENT AND SHOULD NOT BE DISCLOSED TO ANY ORGANIZATION OR PERSON WITHOUT FIRST OBTAINING WRITTEN PERMISSION FROM MID CONTINENT CONTROLS, INC.		Mid Continent Controls, Inc. (316)789-0088 901 N. River, Derby, KS 67037	
FINISH: PER CUST PD		SWITCH PANEL	
MATERIAL: N/A	SIZE C	DRAWN TLP	DWG NO. 101007
TOLERANCE: ±0.010" UNLESS NOTED	SCALE 1:1	DATE 12/02/01	SHEET 3 OF

NOTES:

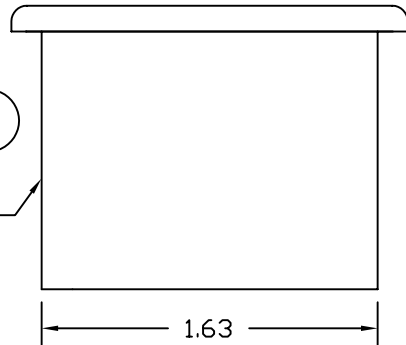
- 1) TESTING: USE MCCI DOCUMENT # MCC-14-596.
- 2) P/N OF ITT CANNON
- 3) WIRE BUNDLE LENGTH TO BE 12" MINIMUM FROM END OF PANEL.
- 4) ASSEMBLY SCREWS REQUIRED (FOUR #2-56 x 0.25" FLAT HEAD)
- 5) INSTALLATION PROCEDURES: SEE MCCI DOCUMENT NUMBER MCC-19-021.
- 6) BEZEL NOT INCLUDED. REQUEST PN 401410.
- 7) RECEIVER NOT INCLUDED. REQUEST PN 401432.
- 8) BACKLIGHTING AND STATUS DOT ARE BLUE.
- 9) OPERATION MANUAL: SEE MCCI DOCUMENT NUMBER MCC-19-045

(A) (B₁) (C)

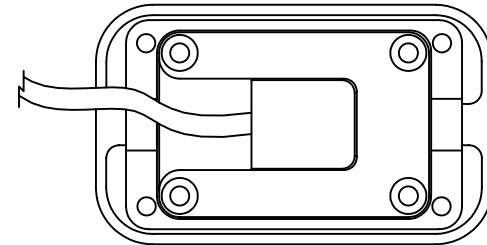
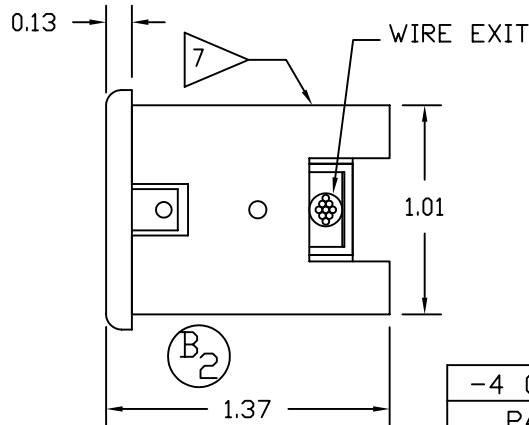
REVISIONS			
REV	DESCRIPTION	DATE	DRAWN
A	REDRAWN TO INCLUDE RECEIVER	01/15/2002	TLP
B	1) NOTE 7 STATED "REQUEST PN 401382" 2) REPLACED SHOWN 401382 RECEIVER WITH 401432 RECEIVER.	01/29/2002	GBE
C	NOTE 9 ADDED	2/24/2003	EAH



(6) REMOVABLE BEZEL



(4) ENTRY PANEL



-4 CONNECTOR DESCRIPTION		
PART NUMBER	DESCRIPTION	
DEMA9P	CONNECTOR	
DE44994	BACKSHELL	
D20419-21	SCREW LOCKS	
WIRE DESCRIPTION		
PIN	DESCRIPTION	CIRCUIT TYPE
1	28VDC POWER	AIRCRAFT 28VDC
2	GROUND	AIRCRAFT GROUND
3	HOT BATTERY BUS	28VDC HOT BATTERY BUS
4	NC	NA
5	NC	NA
6	NC	NA
7	ENTRY OUTPUT	ALT. ACTION +28VDC @ 1A
8	ENTRY REMOTE INPUT	MOM. GND INPUT @ 50mA
9	DOOR LOCK INPUT	DOOR LOCK GND INPUT @ 50mA

THIS DRAWING CONTAINS PROPRIETARY INFORMATION AND TECHNICAL MATERIAL THAT ARE THE SOLE PROPERTY OF MID CONTINENT CONTROLS, INC. THIS MATERIAL SHOULD BE TREATED AS CONFIDENTIAL BY ITS RECIPIENT AND SHOULD NOT BE SHOWN OR DISCLOSED TO ANY ORGANIZATION OR PERSON WITHOUT FIRST OBTAINING WRITTEN PERMISSION FROM MID CONTINENT CONTROLS, INC.

Mid Continent Controls, Inc. (316)789-0088
901 N. River, Derby, KS 67037

FINISH: PER PD		SWITCH PANEL		
MATERIAL: ALUMINUM 6061-T6	SIZE A	DRAWN TLP	DWG NO. 101007	REV C
TOLERANCE: ±0.01" UNLESS NOTED	SCALE 1=1	DATE 11/20/2001	SHEET 4	OF