

4

3

2

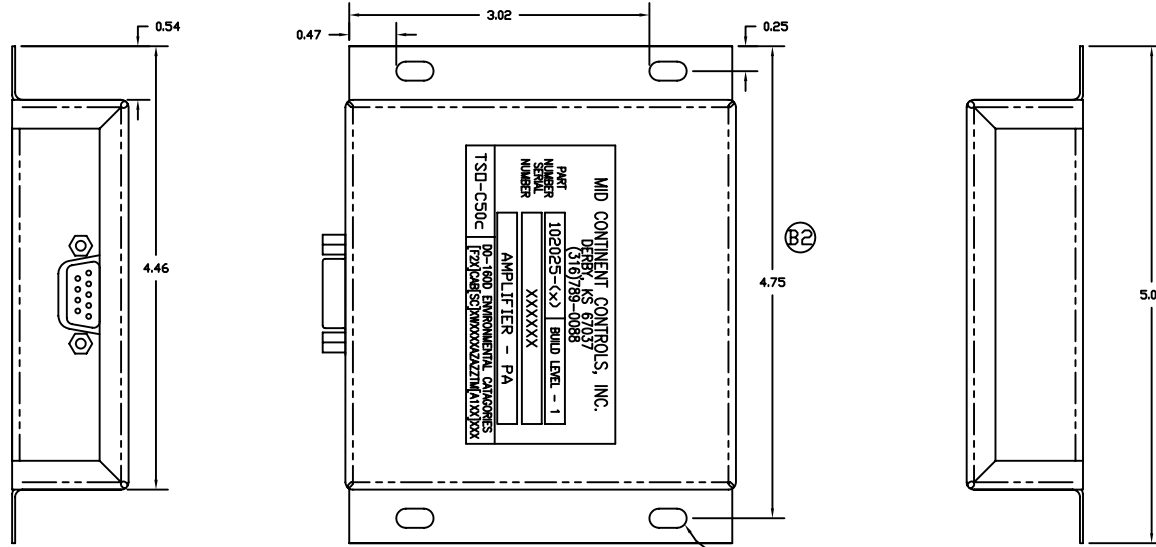
1

NOTES:

(B1)

- 1. POWER CONSUMPTION: 0.1A (average with PA Audio present on input)  
WEIGHT: 0.55 lbs  
RATED CONTINUOUS POWER OUTPUT INTO 4 OHMS: 5 Watts (RMS)
- 2. AUDIO INPUTS LEVELS: -1 --> 0.3 - 0.6 Vrms  
-2 --> 0.075 - 0.125 Vrms
- 3. SEE MCCI# MCC-19-104 FOR INSTALLATION & OPERATION SPECS
- 4. GAIN: 102025-1 --> +20dBV  
102025-2 --> +32dBV

REVISIONS				
ZONE	REV	DESCRIPTION	DATE	DRAWN
D4	A	UPDATED NOTES 1 & 2. VALUES WERE "I.B.D."	6/17/2004	DLS
D4	B1	UPDATED NOTES 2: ADDED INPUT RANGE FOR -2 ADDED THE WORD "RATED" TO NOTE 1, LINE 3 ADDED NOTE 4	2/18/2005	DLS
B2	B2	PART NUMBER ON THIS DRAWING WAS: "102025-1"		
A2	B3	ADDED -2 ASSEMBLY		



MID CONTINENT CONTROLS, INC.  
 PART NUMBER 102025-1  
 BUILD LEVEL - 1  
 XXXXXX  
 AMPLIFIER - PA  
 TSD-C50C  
 DO NOT ENVIRONMENTAL DAMAGE

0.193W x 0.375\"/>

(1) (2) (B3)



CONNECTOR DESCRIPTION	
PART NUMBER	DESCRIPTION
161A17529X	CONNECTOR
D20418-2	JACK POST
DEMA9S	MATING CONNECTOR
WIRE DESCRIPTION	
PIN	DESCRIPTION
1	28VDC
2	GROUND
3	PA AUDIO + — AUDIO INPUT
4	NC
5	OUTPUT + — AUDIO OUTPUT
6	NC
7	PA AUDIO - — AUDIO INPUT
8	NC
9	OUTPUT - — AUDIO OUTPUT

THIS DRAWING CONTAINS PROPRIETARY INFORMATION AND TECHNICAL MATERIAL THAT ARE THE SOLE PROPERTY OF MID CONTINENT CONTROLS, INC. THIS MATERIAL SHOULD BE TREATED AS CONFIDENTIAL BY ITS RECEIPT AND SHOULD NOT BE SHOWN OR DISCLOSED TO ANY ORGANIZATION OR PERSON WITHOUT FIRST OBTAINING WRITTEN PERMISSION FROM MID CONTINENT CONTROLS, INC.		Mid Continent Controls, Inc. (316)789-0088 901 N .River Derby, KS 67037	
FINISH: ANODIZE TYPE II, CLASS 2, BLACK/MIL-A-8625		AMPLIFIER - PA	
MATERIAL: N/A	SIZE C	DRAWN GBE	DWG NO. 102025
TOLERANCE: ±0.010" UNLESS NOTED	SCALE 1:1	DATE 03/09/2004	SHEET 1 OF 1

4

3

2

1