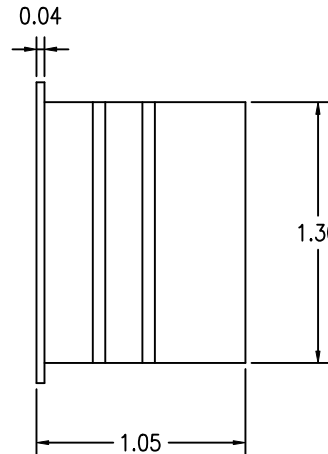
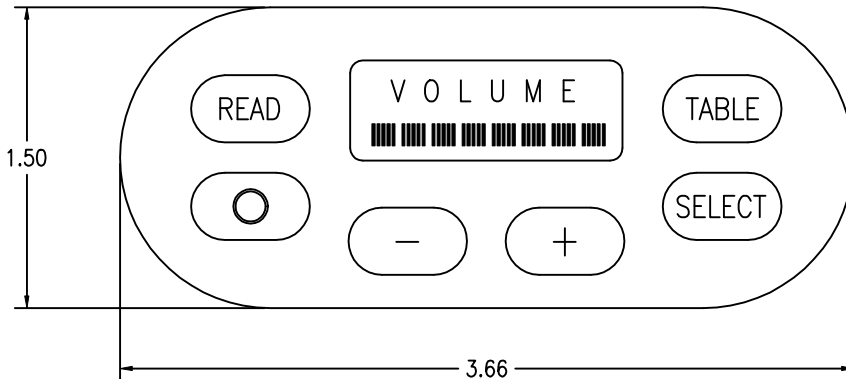
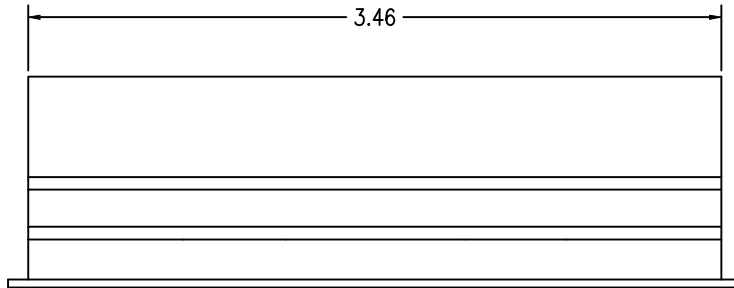


NOTES

- 1) PIGTAIL LENGTH TO BE 12" MINIMUM FROM END OF PANEL.
- 2) TEST PER MCC-14-337.
- 3) LCD UNIVERSAL PANEL LABELS PROGRAMMED PER MCC-14-338.
- 4) REFER TO MCC-14-339 FOR DETAILED OPERATING SPECIFICATIONS AND FAULT PROTECTION.

REVISIONS			
REV	DESCRIPTION	DATE	APPR



-1 --- CONNECTOR #1 DESCRIPTION	
PART NUMBER	DESCRIPTION
DEMA 9P	CONNECTOR
DE44994	BACKSHELL
D20419-21	MALE SCREWLOCK
WIRE DESCRIPTION	
PIN	DESCRIPTION
1	+28VDC
2	GND
3	READ OUTPUT (+28VDC @ 1 AMP)
4	TABLE OUTPUT (+28VDC @ 1 AMP)
5	READ SW CONTACT (2-WAY)
6	TABLE SW CONTACT (2-WAY)
7	NC
8	READ LIGHT 28VDC INPUT
9	TABLE LIGHT 28VDC INPUT

-1 --- CONNECTOR #2 DESCRIPTION	
PART NUMBER	DESCRIPTION
DAMA - 15P	CONNECTOR
DA20961	BACKSHELL
D20419-21	MALE SCREWLOCK
WIRE DESCRIPTION	
PIN	DESCRIPTION
1	NC
2	NC
3	NC
4	NC
5	AUDIO LEFT CHANNEL +
6	AUDIO RIGHT CHANNEL +
7	AUDIO COMMON
8	NC
9	NC
10	NC
11	VIDEO SELECT (MOM. GND @ 50mA)
12	VIDEO STATUS BIT 0 ▲
13	VIDEO STATUS BIT 1 ▲
14	NC
15	NC

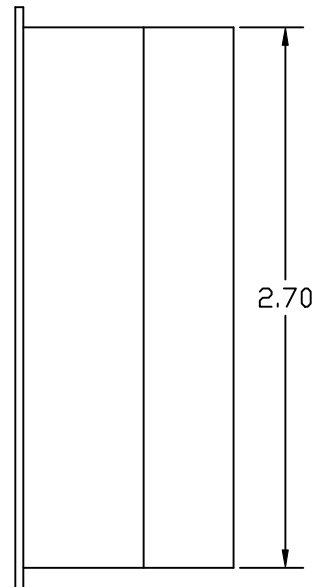
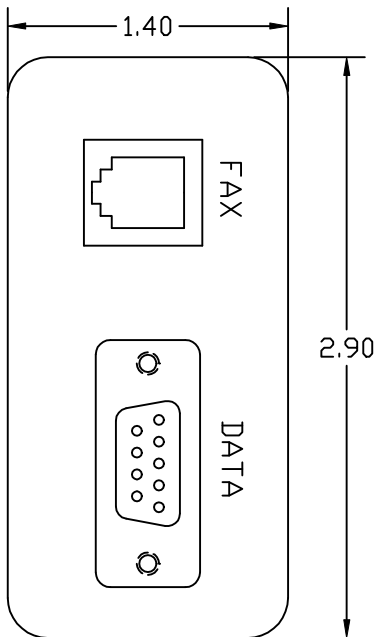
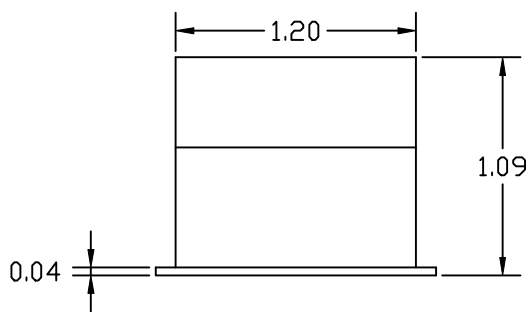
▲ NOTE: STATUS LINES ARE ACTIVE GND INPUTS. INACTIVE LINES ARE FLOATING.

① SEAT HEADPHONE PANEL - LH

THIS DRAWING CONTAINS PROPRIETARY INFORMATION AND TECHNICAL MATERIAL THAT ARE THE SOLE PROPERTY OF MID CONTINENT CONTROLS, INC. THIS MATERIAL SHOULD BE TREATED AS CONFIDENTIAL BY ITS RECIPIENT AND SHOULD NOT BE SHOWN OR DISCLOSED TO ANY ORGANIZATION OR PERSON WITHOUT FIRST OBTAINING WRITTEN PERMISSION FROM MID CONTINENT CONTROLS, INC.

Mid Continent Controls, Inc. (316)789-0088  
219 S. Water, Derby, KS 67037

FINISH: CUSTOMER P.O.		LCD UNIVERSAL HEADPHONE SWITCH PANEL		
MATERIAL: N/A	SIZE A	DRAWN DLS	DWG NO. 101230	REV IR
TOLERANCE: ± 0.010" UNLESS NOTED	SCALE N/A	DATE 7/20/2000	SHEET 1 OF	



(221)

REVISIONS			
REV	DESCRIPTION	DATE	APPR

-221 CONNECTOR DESCRIPTION	
PART NUMBER	DESCRIPTION
DEMA 9P	CONNECTOR
DE44994	BACKSHELL
D20419-21	MALE SCREWLOCK
WIRE DESCRIPTION	
PIN	DESCRIPTION
1	NC
2	NC
3	FAX DATA LINE 3 (GREEN)
4	FAX DATA LINE 2 (RED)
5	FAX DATA LINE 1 (BLACK)
6	FAX DATA LINE 4 (YELLOW)
7	NC
8	NC
9	NC

-221 CONNECTOR #2 DESCRIPTION	
PART NUMBER	DESCRIPTION
DAMA 15P	CONNECTOR
DA20961	BACKSHELL
D20419-21	MALE SCREWLOCK
WIRE DESCRIPTION	
PIN	DESCRIPTION
1	PIN 1 (FRONT PANEL DEMA9S)
2	PIN 2 (FRONT PANEL DEMA9S)
3	PIN 3 (FRONT PANEL DEMA9S)
4	PIN 4 (FRONT PANEL DEMA9S)
5	PIN 5 (FRONT PANEL DEMA9S)
6	PIN 6 (FRONT PANEL DEMA9S)
7	PIN 7 (FRONT PANEL DEMA9S)
8	PIN 8 (FRONT PANEL DEMA9S)
9	PIN 9 (FRONT PANEL DEMA9S)
10	NC
11	NC
12	NC
13	NC
14	NC
15	NC

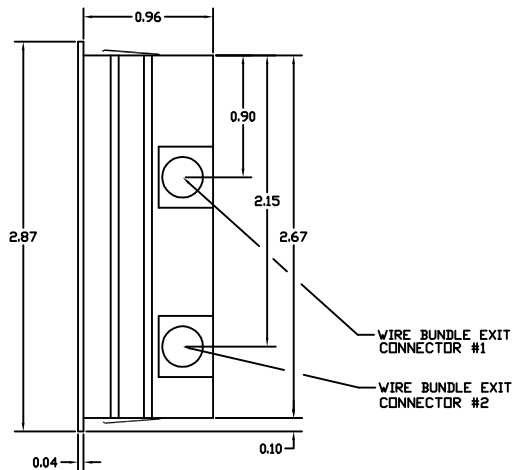
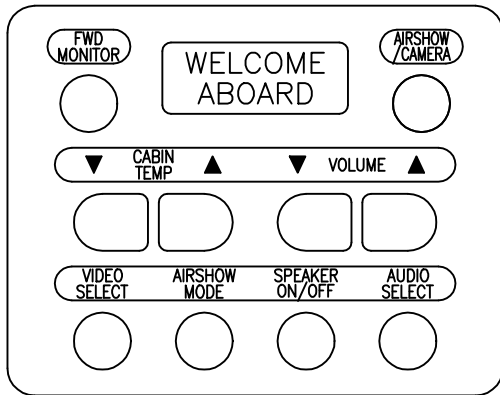
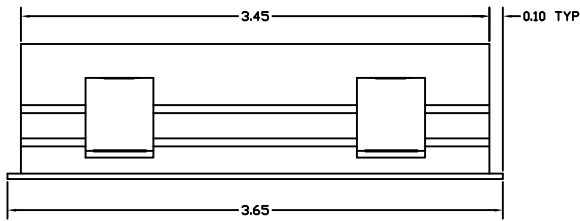
THIS DRAWING CONTAINS PROPRIETARY INFORMATION AND TECHNICAL MATERIAL THAT ARE THE SOLE PROPERTY OF MID CONTINENT CONTROLS, INC. THIS MATERIAL SHOULD BE TREATED AS CONFIDENTIAL BY ITS RECIPIENT AND SHOULD NOT BE SHOWN OR DISCLOSED TO ANY ORGANIZATION OR PERSON WITHOUT FIRST OBTAINING WRITTEN PERMISSION FROM MID CONTINENT CONTROLS, INC.

Mid Continent Controls, Inc. (316)789-0088  
 219 S. Water, Derby, KS 67037

FINISH: CUSTOMER P.D.		SWITCH PANELS		
MATERIAL: N/A	SIZE A	DRAWN DLS	DWG NO. 101001	REV IR
TOLERANCE: ± 0.010" UNLESS NOTED	SCALE N/A	DATE 8/15/2000	SHEET 109 OF	

**NOTES:**

- 1) PIGTAIL LENGTH TO BE 12" MINIMUM MEASURED FROM END OF SWITCH PANEL.
- 2) DO NOT EXCEED 5.0 AMPS CONTINUOUS CURRENT IN PIN 1 OF CONNECTOR #1.
- 3) REFER TO MCCI DOCUMENT # MCC-14-020 FOR DETAILED INFORMATION ABOUT FAULT PROTECTION.
- 4) TEST PER MCCI DOCUMENT # MCC-14-374.
- 5) REFER TO MCCI DOCUMENT # MCC-19-010 FOR PROGRAMMING INSTRUCTIONS.
- 6) THE -227 IS NOT A CLOSED LOOP TEMPERATURE CONTROLLER. THE REMOTE SENSOR USED IN THE -227 IS ONLY UTILIZED TO PROVIDE A DISPLAY OF THE CURRENT TEMPERATURE AT THAT LOCATION.



**REVISIONS**

ZONE	REV	DESCRIPTION	DATE	APPROVED
	A	Added Notes 5 and 6	10/12/00	DLS

-227 CONNECTOR #2 DESCRIPTION		
PART NUMBER	DESCRIPTION	
DBMA 15P	CONNECTOR	
DB20961	BACKSHELL	
DB20419-21	MALE SCREW LOCK	
WIRE DESCRIPTION		
PIN	DESCRIPTION	CIRCUIT TYPE
1	NC	N/A
2	NC	N/A
3	NC	N/A
4	NC	N/A
5	NC	N/A
6	NC	N/A
7	AIRSHOW MODE OUTPUT	MDM. GND @ 50mA
8	AUDIO SELECT OUTPUT	MDM. GND @ 50mA
9	AUDIO STATUS INPUT BIT 0	LATCHING GND
10	AUDIO STATUS INPUT BIT 1	LATCHING GND
11	VIDEO SELECT OUTPUT	MDM. GND @ 50mA
12	VIDEO STATUS INPUT BIT 0	LATCHING GND
13	VIDEO STATUS INPUT BIT 1	LATCHING GND
14	SPEAKER ON/OFF STATUS INPUT	28Vdc INPUT @ 5mA
15	SPEAKER ON/OFF OUTPUT	MDM. GND @ 50mA

-227 CONNECTOR #1 DESCRIPTION		
PART NUMBER	DESCRIPTION	
DBMA 25P	CONNECTOR	
DB20692	BACKSHELL	
DB20419-21	MALE SCREW LOCK	
WIRE DESCRIPTION		
PIN	DESCRIPTION	CIRCUIT TYPE
1	+28VDC	SUPPLY VOLTAGE
2	GND	DC RETURN
3	NC	N/A
4	NC	N/A
5	FWD MONITOR STATUS INPUT	28 Vdc INPUT @ 5mA
6	AIRSHOW/CAMERA STATUS INPUT	28 Vdc INPUT @ 5mA
7	FWD MONITOR REMOTE OUTPUT	MDM. GND @ 50mA
8	AIRSHOW/CAMERA REMOTE OUTPUT	MDM. GND @ 50mA
9	VOLUME STATUS INPUT BIT 0	LATCHING GND
10	VOLUME STATUS INPUT BIT 1	LATCHING GND
11	VOLUME STATUS INPUT BIT 2	LATCHING GND
12	VOLUME STATUS INPUT BIT 3	LATCHING GND
13	VOLUME STATUS INPUT BIT 4	LATCHING GND
14	NC	N/A
15	NC	N/A
16	LOCAL CONTROL ACTIVE	LATCHING GND INPUT
17	CABIN TEMP PDT (+)	UP
18	CABIN TEMP PDT (WIPER)	1K
19	CABIN TEMP PDT (-)	UP
20	REMOTE SENSOR POWER OUT (+5V)	DC POWER FOR REMOTE SENSOR
21	REMOTE SENSOR GND	DC RETURN FOR REMOTE SENSOR
22	REMOTE SENSOR CLOCK	SENSOR CLOCK (MDM. GND INPUT)
23	REMOTE SENSOR DATA	SENSOR DATA (MDM. GND INPUT)
24	VOLUME UP OUTPUT	MDM. GND @ 50mA
25	VOLUME DOWN OUTPUT	MDM. GND @ 50mA

227

FORWARD CABIN CONTROL PANEL

THIS DRAWING CONTAINS PROPRIETARY INFORMATION AND TECHNICAL MATERIAL THAT ARE THE SOLE PROPERTY OF MID CONTINENT CONTROLS, INC. THIS MATERIAL SHOULD BE TREATED AS CONFIDENTIAL BY ITS RECIPIENT AND SHOULD NOT BE SHOWN OR DISCLOSED TO ANY ORGANIZATION OR PERSON WITHOUT FIRST OBTAINING WRITTEN PERMISSION FROM MID CONTINENT CONTROLS, INC.

Mid Continent Controls, Inc. (316)789-0088  
219 S. Water, Derby, KS 67037

FINISH: PER CUSTOMER P.D.

SWITCH PANEL

MATERIAL: N/A

SIZE B	DRAWN DLS	DWG NO. 101001	REV A
--------	-----------	----------------	-------

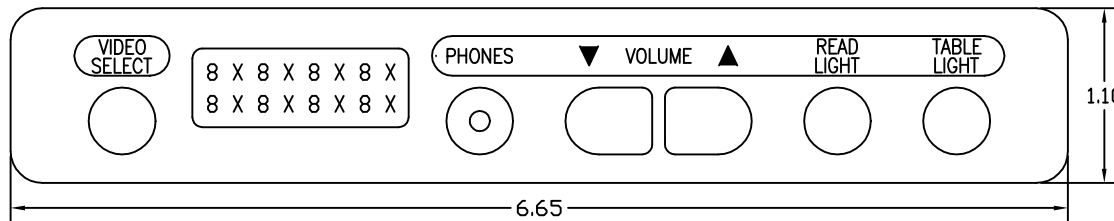
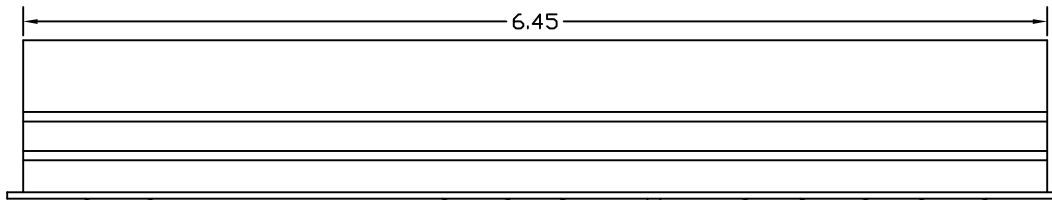
TOLERANCE: ±0.010" UNLESS NOTED

SCALE	DATE 10-10-00	SHEET 114
-------	---------------	-----------

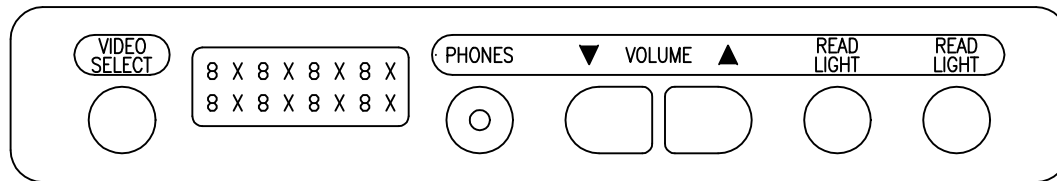
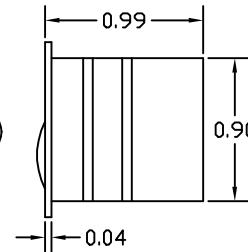
NOTES:

- 1) PIGTAIL LENGTH TO BE 12" MINIMUM MEASURED FROM END OF SWITCH PANEL.
- 2) DO NOT EXCEED 5.0 AMPS CONTINUOUS CURRENT IN PIN 1 OF CONNECTOR #1.
- 3) REFER TO MCC DOCUMENT # MCC-14-020 FOR DETAILED INFORMATION ON FAULT PROTECTION.
- 4) REFER TO DOCUMENT #MCC-14-429 FOR PROGRAMMING INSTRUCTIONS.

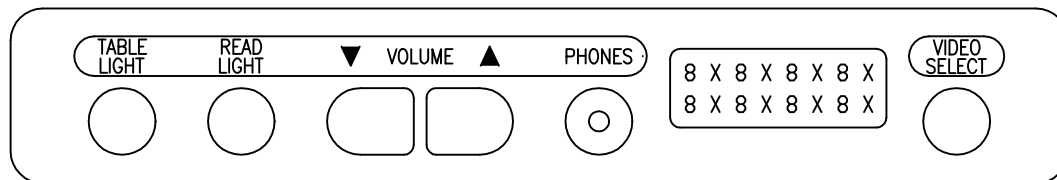
REVISIONS			
REV	DESCRIPTION	DATE	APPR



259



260



261

-259 & -261 CONNECTOR #1 DESCRIPTION		
PART NUMBER	DESCRIPTION	
DEMA 9P	CONNECTOR	
DE44994	BACKSHELL	
D20419-21	MALE SCREWLOCK	
WIRE DESCRIPTION		
PIN	DESCRIPTION	CIRCUIT TYPE
1	+28VDC	SUPPLY VOLTAGE
2	GND	DC RETURN
3	READ OUTPUT	ALT ACTION 28VDC @2A
4	TABLE OUTPUT	ALT ACTION 28VDC @2A
5	READ 2-WAY	MDM GND @ 50mA
6	TABLE 2-WAY	MDM GND @ 50mA
7	NC	N/A
8	NC	N/A
9	NC	N/A

-260 CONNECTOR #1 DESCRIPTION		
PART NUMBER	DESCRIPTION	
DEMA 9P	CONNECTOR	
DE44994	BACKSHELL	
D20419-21	MALE SCREWLOCK	
WIRE DESCRIPTION		
PIN	DESCRIPTION	CIRCUIT TYPE
1	+28VDC	SUPPLY VOLTAGE
2	GND	DC RETURN
3	READ OUTPUT	ALT ACTION 28VDC @2A
4	Outside READ OUTPUT	ALT ACTION 28VDC @2A
5	READ 2-WAY	MDM GND @ 50mA
6	Outside READ 2-WAY	MDM GND @ 50mA
7	NC	N/A
8	NC	N/A
9	NC	N/A

-259, -260, & -261 CONNECTOR #2 DESCRIPTION		
PART NUMBER	DESCRIPTION	
DAMA 15P	CONNECTOR	
D820961	BACKSHELL	
D20419-21	MALE SCREWLOCK	
WIRE DESCRIPTION		
PIN	DESCRIPTION	CIRCUIT TYPE
1	NC	N/A
2	NC	N/A
3	NC	N/A
4	NC	N/A
5	AUDIO LEFT CHANNEL +	AUDIO
6	AUDIO RIGHT CHANNEL +	AUDIO
7	AUDIO COMMON	AUDIO RETURN
8	NC	N/A
9	NC	N/A
10	NC	N/A
11	VIDEO SELECT	MDM GND @ 50mA
12	VIDEO STATUS BIT 0	LATCHING GND INPUT
13	VIDEO STATUS BIT 1	LATCHING GND INPUT
14	NC	N/A
15	NC	N/A

THIS DRAWING CONTAINS PROPRIETARY INFORMATION AND TECHNICAL MATERIAL THAT ARE THE SOLE PROPERTY OF MID CONTINENT CONTROLS, INC. THIS MATERIAL SHOULD BE TREATED AS CONFIDENTIAL BY ITS RECIPIENT AND SHOULD NOT BE SHOWN OR DISCLOSED TO ANY ORGANIZATION OR PERSON WITHOUT FIRST OBTAINING WRITTEN PERMISSION FROM MID CONTINENT CONTROLS, INC.

Mid Continent Controls, Inc. (316)789-0088  
219 S. Water, Derby, KS 67037

FINISH: CUSTOMER P.D.  
MATERIAL: N/A  
TOLERANCE: ± 0.010" UNLESS NOTED

SWITCH PANELS  
SIZE A DRAWN JLA DWG NO. 101001 REV IR  
SCALE N/A DATE 2/20/01 SHEET 129 OF